

Rā Tuarua - Rāmere 27 Mahuru 2024

Day 2 - Friday 27 September 2024

Wāhanga (session) 2: Case Studies



# FELTON ROAD

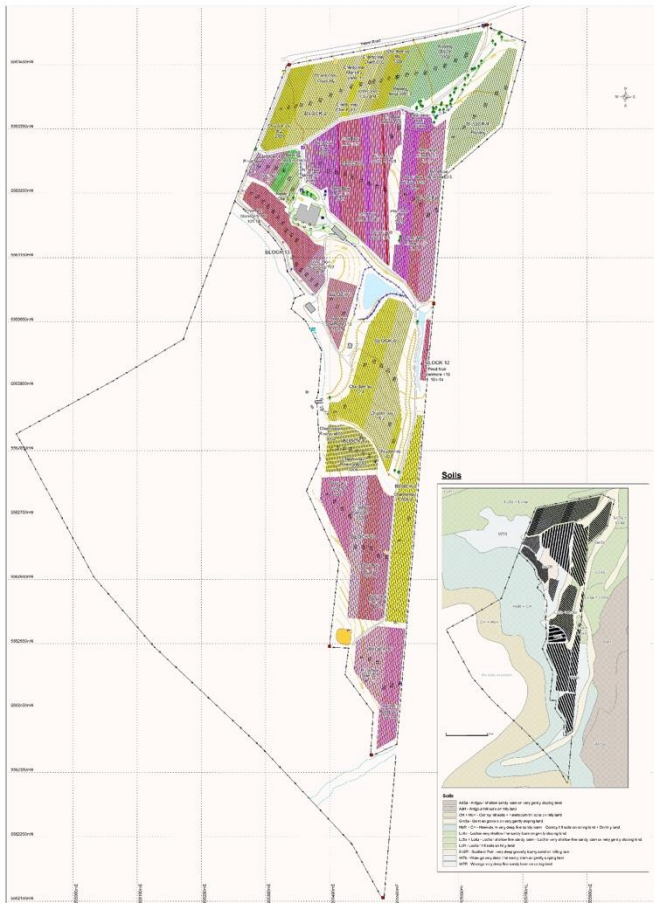
BLAIR WALTER



# Elms Vineyard

Bannockburn

Central Otago



**LEGEND**

- Value**
- 1 1st
  - 2 2nd
  - 3 3rd
  - 4 4th
  - 5 5th
  - 6 6th
  - 7 7th
  - 8 8th
  - 9 9th
  - 10 10th
  - 11 11th
  - 12 12th
  - 13 13th
  - 14 14th
  - 15 15th
  - 16 16th
  - 17 17th
  - 18 18th
  - 19 19th
  - 20 20th
  - 21 21st
  - 22 22nd
  - 23 23rd
  - 24 24th
  - 25 25th
  - 26 26th
  - 27 27th
  - 28 28th
  - 29 29th
  - 30 30th
  - 31 31st
  - 32 32nd
  - 33 33rd
  - 34 34th
  - 35 35th
  - 36 36th
  - 37 37th
  - 38 38th
  - 39 39th
  - 40 40th
  - 41 41st
  - 42 42nd
  - 43 43rd
  - 44 44th
  - 45 45th
  - 46 46th
  - 47 47th
  - 48 48th
  - 49 49th
  - 50 50th
- Map unit**
- 1 1st
  - 2 2nd
  - 3 3rd
  - 4 4th
  - 5 5th
  - 6 6th
  - 7 7th
  - 8 8th
  - 9 9th
  - 10 10th
  - 11 11th
  - 12 12th
  - 13 13th
  - 14 14th
  - 15 15th
  - 16 16th
  - 17 17th
  - 18 18th
  - 19 19th
  - 20 20th
  - 21 21st
  - 22 22nd
  - 23 23rd
  - 24 24th
  - 25 25th
  - 26 26th
  - 27 27th
  - 28 28th
  - 29 29th
  - 30 30th
  - 31 31st
  - 32 32nd
  - 33 33rd
  - 34 34th
  - 35 35th
  - 36 36th
  - 37 37th
  - 38 38th
  - 39 39th
  - 40 40th
  - 41 41st
  - 42 42nd
  - 43 43rd
  - 44 44th
  - 45 45th
  - 46 46th
  - 47 47th
  - 48 48th
  - 49 49th
  - 50 50th
- Vegetation**
- 1 1st
  - 2 2nd
  - 3 3rd
  - 4 4th
  - 5 5th
  - 6 6th
  - 7 7th
  - 8 8th
  - 9 9th
  - 10 10th
  - 11 11th
  - 12 12th
  - 13 13th
  - 14 14th
  - 15 15th
  - 16 16th
  - 17 17th
  - 18 18th
  - 19 19th
  - 20 20th
  - 21 21st
  - 22 22nd
  - 23 23rd
  - 24 24th
  - 25 25th
  - 26 26th
  - 27 27th
  - 28 28th
  - 29 29th
  - 30 30th
  - 31 31st
  - 32 32nd
  - 33 33rd
  - 34 34th
  - 35 35th
  - 36 36th
  - 37 37th
  - 38 38th
  - 39 39th
  - 40 40th
  - 41 41st
  - 42 42nd
  - 43 43rd
  - 44 44th
  - 45 45th
  - 46 46th
  - 47 47th
  - 48 48th
  - 49 49th
  - 50 50th
- Water**
- 1 1st
  - 2 2nd
  - 3 3rd
  - 4 4th
  - 5 5th
  - 6 6th
  - 7 7th
  - 8 8th
  - 9 9th
  - 10 10th
  - 11 11th
  - 12 12th
  - 13 13th
  - 14 14th
  - 15 15th
  - 16 16th
  - 17 17th
  - 18 18th
  - 19 19th
  - 20 20th
  - 21 21st
  - 22 22nd
  - 23 23rd
  - 24 24th
  - 25 25th
  - 26 26th
  - 27 27th
  - 28 28th
  - 29 29th
  - 30 30th
  - 31 31st
  - 32 32nd
  - 33 33rd
  - 34 34th
  - 35 35th
  - 36 36th
  - 37 37th
  - 38 38th
  - 39 39th
  - 40 40th
  - 41 41st
  - 42 42nd
  - 43 43rd
  - 44 44th
  - 45 45th
  - 46 46th
  - 47 47th
  - 48 48th
  - 49 49th
  - 50 50th
- Soils**
- 1 1st
  - 2 2nd
  - 3 3rd
  - 4 4th
  - 5 5th
  - 6 6th
  - 7 7th
  - 8 8th
  - 9 9th
  - 10 10th
  - 11 11th
  - 12 12th
  - 13 13th
  - 14 14th
  - 15 15th
  - 16 16th
  - 17 17th
  - 18 18th
  - 19 19th
  - 20 20th
  - 21 21st
  - 22 22nd
  - 23 23rd
  - 24 24th
  - 25 25th
  - 26 26th
  - 27 27th
  - 28 28th
  - 29 29th
  - 30 30th
  - 31 31st
  - 32 32nd
  - 33 33rd
  - 34 34th
  - 35 35th
  - 36 36th
  - 37 37th
  - 38 38th
  - 39 39th
  - 40 40th
  - 41 41st
  - 42 42nd
  - 43 43rd
  - 44 44th
  - 45 45th
  - 46 46th
  - 47 47th
  - 48 48th
  - 49 49th
  - 50 50th

**FELTON ROAD**  
**The Elms Vineyard**

This map is intended as a general guide only. It does not constitute a contract. The user of this map should consult the relevant legislation and regulations for more detailed information.

**Felton Road Wines Ltd**  
Riverside, Central Otago, New Zealand  
03-643 820983 | Fax: 03-643 481982  
www.FeltonRoad.com

Scale: 1:2000  
Projection: NZ Map Grid  
Date: 26/03/2017  
Map Ref: F022A1\_260704  
Datum: New Zealand Geoidic 1949  
Data Collected: 11/03/03 & 09/03/05





Block 2

Block 3

Block 5

Block 1

Elms Vineyard, looking northeast

## Felton Road Chardonnay *Block 2*

ANALYSIS							
	Harvest	Juice			Wine		
		Brix	pH	TA	Alc	pH	TA
<b>2017</b>	31 March, 4 & 6 April	22.4-23.2	3.15-3.17	8.2-8.8	13.7	3.16	6.8
<b>2018</b>	1, 7 & 12 March	21.7-23.1	3.21-3.31	6.5-7.2	13.9	3.27	5.3

PHENOLOGY						
	BudBurst	50% FL	BB to FL	8 °B	GDD to 8 °B	Days 8 to 21.5 °B
<b>2017</b>	30-Sep	9-Dec	70	16-Feb	434	42
<b>2018</b>	4-Oct	25-Nov	52	22-Jan	613	51
<b>LTA</b>	9-Oct	8-Dec	60	8-Feb	520	47

### KEY VITICULTURE & WINEMAKING

- Schist gravels, 100% Mendoza, own roots, planted 1992, organic/biodynamic since 2003
- Whole bunch pressed, settled overnight, indigenous ferment, indigenous malo in spring
- 16 months in barrel, no new, 10 months gross lees then racked, further 6 months
- Bottled no cold stab, no fining, no filtration



CHARDONWAY  
WINE